

Building A 1st Floor

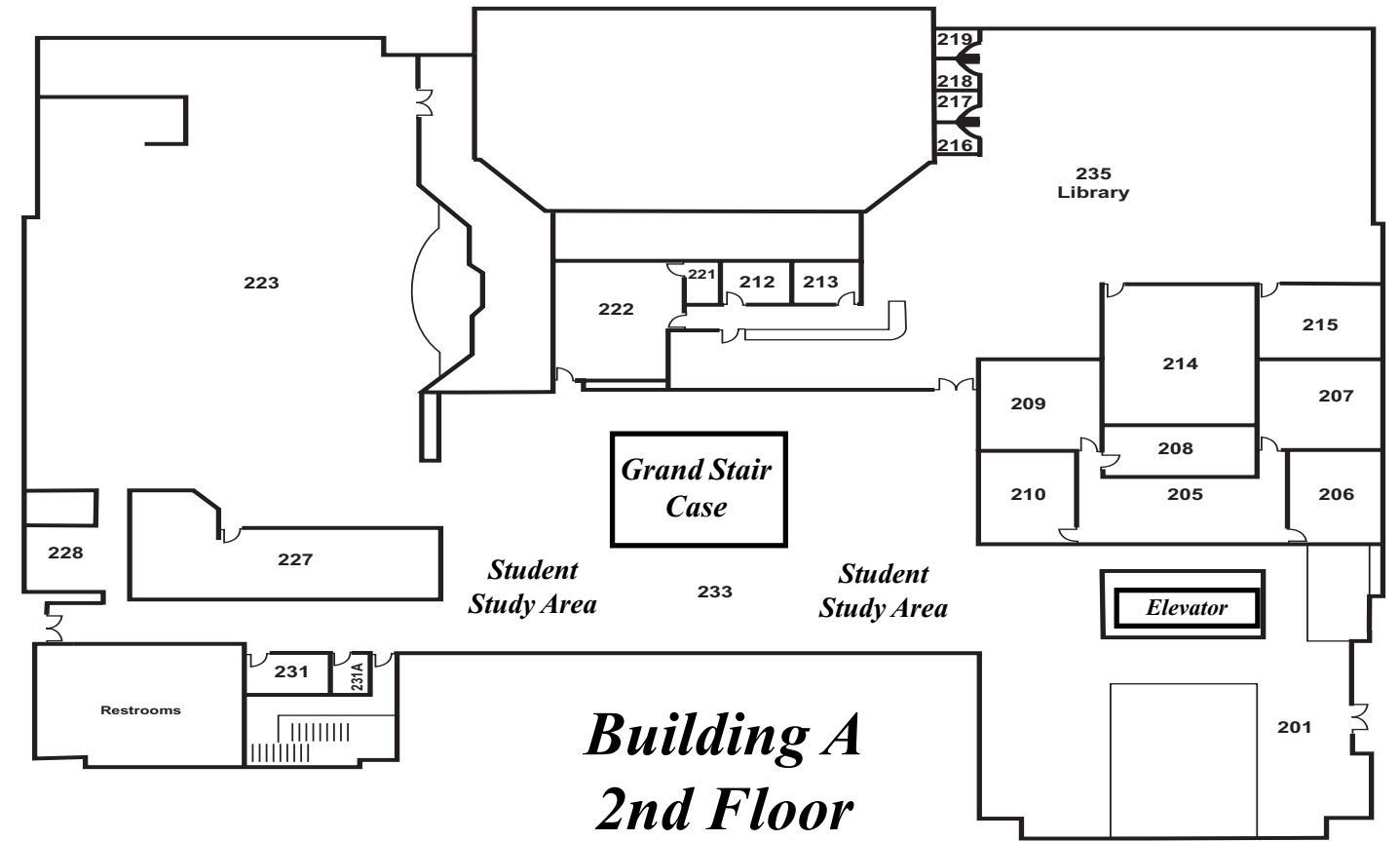
Room #107 is the **Student Services** area. Admissions, NSU Business Office, Financial Aid, Academic Advisement, and High School and College Relations are housed in this area. You may also get a student I.D. and printed class schedules.

Room #159 is the permanent home of the **NSU-BA Bookstore**. The NSU Bookstore will have all books available as requested by your instructor. The bookstore will host extended hours January 14 - 17, 8:30 p.m. - 8:30 p.m.; January 18, 9:00 a.m. - 6:00 p.m. After January 18, Bookstore will return to normal hours of operation which are 8:30 a.m. - 6:00 p.m., Monday through Thursday, and 9:00 a.m. - 3:00 p.m. on Friday.

There is an **elevator** located in the southeast section of the building near the Information Desk. **Stairways** are at the southwest section of the building, and the grand stair case is located in the center of Building A.

Both **Women's and Men's restroom facilities** are located in the southwest corner of the building, and on either side of room #170 directly behind the grand stair case.

Student Study areas complete with tables, chairs and electrical outlets surround both the bottom and top of the grand stair case.



Building A 2nd Floor

Room #235 is the permanent site for the **NSU-BA Library**. The Library comes complete with internet access workstations and a professional librarian until 8:00 p.m. each evening. Library hours of operation are 8:30 a.m. - 10:00 p.m., Monday through Thursday; 8:30 a.m. - 5:00 p.m. on Friday; 1:00 - 5:00 p.m. on Saturday. The Library will be closed on Sunday.

Academic Affairs is located in room #205 just East of the Grand Stair Case on the second floor. Regular hours of operation are 8:30 a.m. - 5:30, Monday through Thursday, and 8:30 - 5:00 p.m. on Friday. An evening administrator is also available 5:30 - 8:30 p.m., Monday through Thursday.

Both **Women's and Men's restroom facilities** are located at the southwest corner of the second floor.